

MEMBER PROFILE

Taliaferro Jones

Taliaferro Jones graduated from Tufts University and the School of the Museum of Fine Arts Boston, where she received her BA in Art History and her BFA in Photography and in Glass, Mixed Media Sculpture. Most recently, Taliaferro spent two years doing post-graduate work at Sheridan College's Glass Program in Canada refining her sculpture. Taliaferro had her first solo exhibition at Sandra Ainsley in Toronto in May of 2001, and currently exhibits internationally. She recently finished a commission for a client in England, and is working on a large-scale project in California. Her work can be seen in such catalogs as: "Glass 2001" and "Glass 2002" by Georgina Fantoni. Taliaferro now teaches Exhibition Planning and Glass Marketing and Publicity at Sheridan College. She recently opened her own studio in Toronto, where she will continue to make one-of-a-kind sculpture, architectural work, and photography. Her work can be viewed at her website: www.taliaferrojones.com.

Artist's Statement

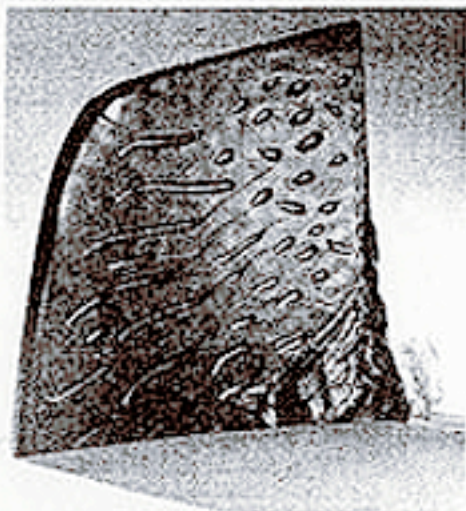
Utilizing texture, form and light, I explore the essence of balance from the physical to the spiritual in my glass sculptures. My sensual minimal glass sculptures incorporate the macro patterns of sand, water, grass and other natural elements on their surface with the form of an arc. In both my sculpture and photography I look at the overall

pattern and hone in on its intrigue in order to draw out the ever-ephemeral elements of balance. Seeking and attaining balance is a constant journey, with ever shifting layers and levels that continually drive my work forward. The essence of what I make is best expressed in this poem:

*To dance in the shadows,
to twirl in the wind,
to float back down to the ground again
is to find balance between the forces of energy
running through our lives.*

*It is a continual act of perching on the edge
and rocking into harmony.*

*It is the struggle and celebration of equilibrium.
It is the soul.*



From top to bottom:

*"Hidden Hope,"
26cm x 25cm x 5cm, kiln cast crystal, 2001.*

*"Ash Acceptance,"
104cm x 20cm x 10cm, kiln cast crystal, 2001.*

*"Soul Sorrow,"
15cm x 60cm x 10cm, kiln cast crystal, 2001.*

Photos by Taliaferro Jones.